

Storage and Disposal

- 1) Paediatric Leg Bags should be stored at an ambient temperature and allowed to come to room temperature before use
- 2) Dispose with normal household waste – do not flush down the toilet

Cautions

- Great Bear Paediatric Leg Bags should be changed every 5-7 days
- Do not reuse the Great Bear Paediatric Leg Bags after disconnection
- Choking Hazard: Keep small parts out of the reach of children

Order Codes

Great Bear Paediatric Leg Bags

All Paediatric Leg Bags come with Fabric Backing and one Leg Bag Strap as standard

Product Code	Capacity	Tube Length	Qty
10101B	150ml	Direct Inlet	10
10125B	150ml	Adjustable Tube (45cm)	10
10111M	250ml	Direct Inlet	10
10135M	250ml	Adjustable Tube (45cm)	10
10103D	350ml	Direct Inlet	10
10151D	350ml	Adjustable Tube (45cm)	10



0120



Do not use if packaging is damaged



Latex Free



Box is Recyclable



Wash Hands



Min/Max Temperature



Keep Dry



DEHP
Denotes the use of Phthalates

STERILE EO



Putting Patients First

Products available through Nightingale Home Delivery Service

1. Call **Freephone 0800 318 559** or **029 2074 7770**.
2. Please ensure you have your GP details to hand.
3. Tell us which products are required and how many.

That's all – We will do everything else!

Please make sure you have at least two week's supply in hand before re-ordering.

Complimentary Items Available:

- Hand Gels
- Radar Keys
- Wet and Dry Wipes
- Disposable Bags
- Night Stands
- Sponge Bag



Mummy, Daddy and Baby Bear Paediatric Leg Bags

Instructions for use

Great Bear Healthcare Ltd
1 Lambourne Crescent,
Cardiff Business Park,
Cardiff, CF14 5GF
T +44 (0) 29 2074 7770

mail@gbhl.co.uk
www.greatbearhealthcare.co.uk

MANDBBEARIFUV3/2019



A UK manufacturer committed to Urology.

Your Paediatric Leg Bag

Great Bear Paediatric Leg Bags are for the daytime storage and drainage of urine. Baby Bear refers to our 150ml capacity Leg Bag, Mummy Bear refers to our 250ml capacity Leg Bag and Daddy Bear Refers to our 350ml capacity Leg Bag*

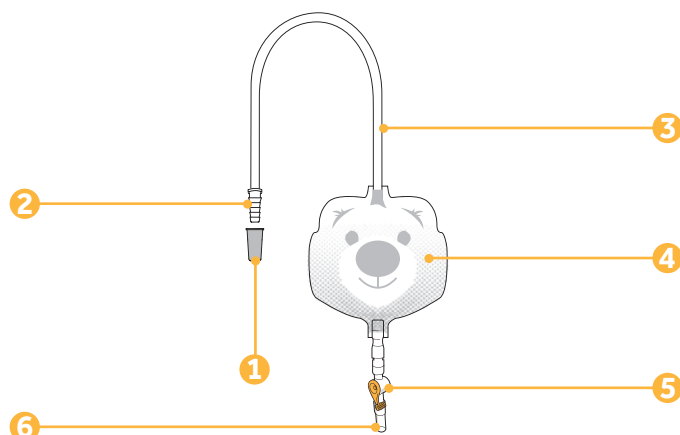
Great Bear's Paediatric Range is specifically designed for babies and young children with a fun child-friendly appearance and smaller capacities

Designed to be connected directly to a Catheter or Sheath for continuous drainage and should only be disconnected when a new bag is required

Great Bear Paediatric Leg Bags can also be connected to a Night Bag for overnight drainage (page 3)

Great Bear Paediatric Leg Bags should be changed every 5-7 days

**Capacities are for guidance only. Great Bear Paediatric Leg Bags are not intended for use as a measuring device*

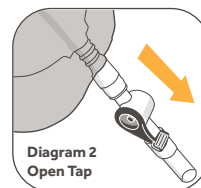
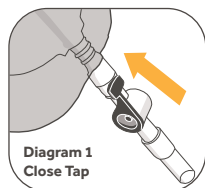


Key	
1 Protective Cap	4 Centrally Positioned Eyelet
2 Ridged Inlet Connector	5 Outlet Tap
3 Inlet Tube	6 Silicone Sleeve

Instructions For Use

Before Use

- 1) Wash Hands
- 2) Open peel pouch and remove the leg bag from its packaging
- 3) Ensure the lever on the outlet tap (5) is in the closed position (Diagram 1)
- 4) Remove the grey protective cap (1) from the inlet connector (2)



Direct Connection

- 1) Insert the ridged inlet connector (2) into the end of the Indwelling Catheter or Sheath. Insert the connector fully to allow a secure connection
- 2) The Leg Bag should be positioned on the thigh or calf, depending on the tube length, and secured appropriately with the paw printed leg bag strap provided
- 3) Feed the leg bag strap through the centrally positioned eyelets(4) on the bag and ensure the wavy silicone line is facing the leg
- 4) Make sure the inlet tubing (3) isn't kinked which can restrict the flow of urine

Emptying

- 1) Empty the Leg Bag by pushing the lever on the outlet tap(5) downwards (Diagram 2)
- 2) After emptying, wrap the outlet tap with a tissue and pat a number of times before gently wiping around the inside of the valve. This will dislodge any residual urine
- 3) Remember to close the tap after emptying (Diagram 1)
- 4) The outlet tap(5) can be twisted to avoid accidental emptying

Overnight Drainage

If you require additional drainage for overnight use, a night bag can be connected as part of an overnight link system

- 1) When you go to bed, do not disconnect your Leg Bag from your Catheter or Sheath
- 2) Insert the connector of your Night Bag to the silicone sleeve(7) on your Leg Bag. Insert the connector fully to allow a secure connection
- 3) once connected, turn the Leg Bag tap to the open position (Diagram 2) to allow the overnight drainage into the Night Bag
- 4) Before disconnecting the Night Bag in the morning, ensure the Leg Bag tap is in the closed position (Diagram 1)
- 5) Do not reconnect a used Night Bag

Paediatric Leg Bags with adjustable tubing

Great Bear Paediatric Leg Bags with an adjustable tube have a 45cm inlet tube(3) which can be cut to the desired length and fitted with the spare connector included in the peel pouch. These Adjustable Leg Bags are designed for direct connection to a Sheath system

- 1) Place the Leg Bag on your leg in the desired position and secure as instructed on page 1
- 2) Measure how long you need the tubing and cut to the desired length
- 3) Remove the Leg Bag from your leg and insert the spare connector into the inlet tube
- 4) Connect the Leg Bag as per the instructions on page 1

Caution: Do not cut the tube length yourself if you are connecting to an Indwelling Catheter as the sterility of the product may become compromised. Please contact our helpline on 0800 055 6270 for further advice